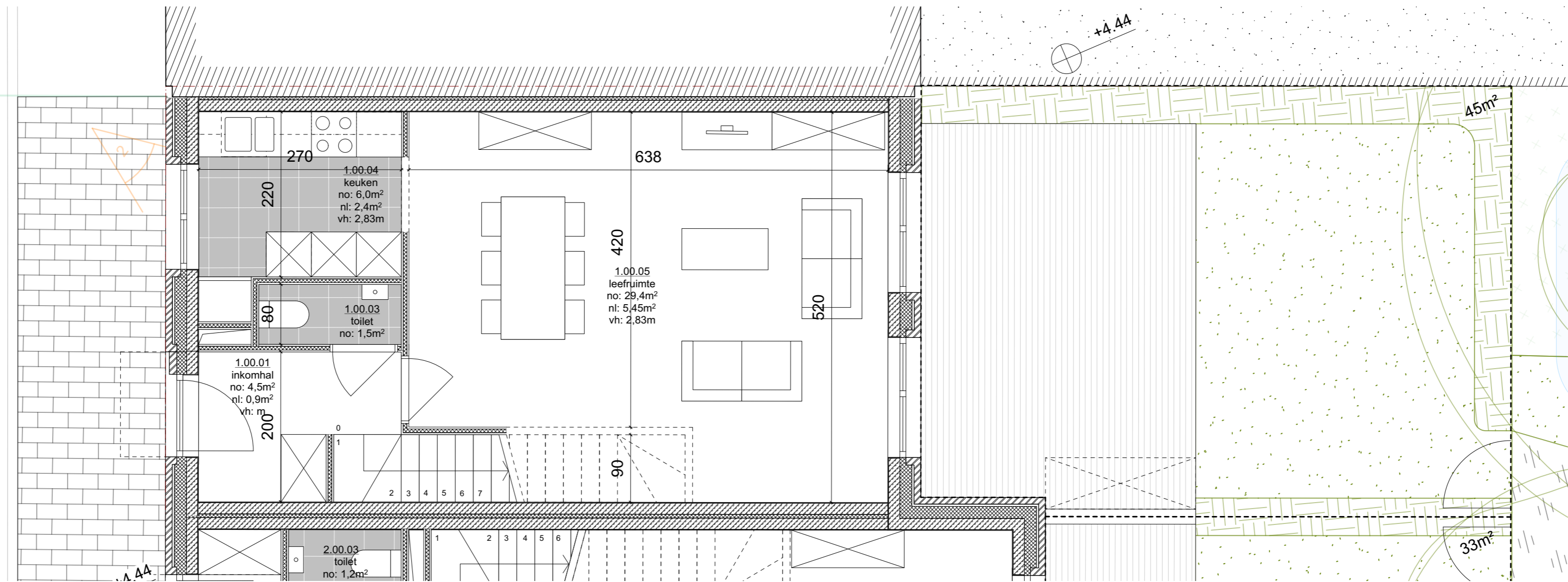
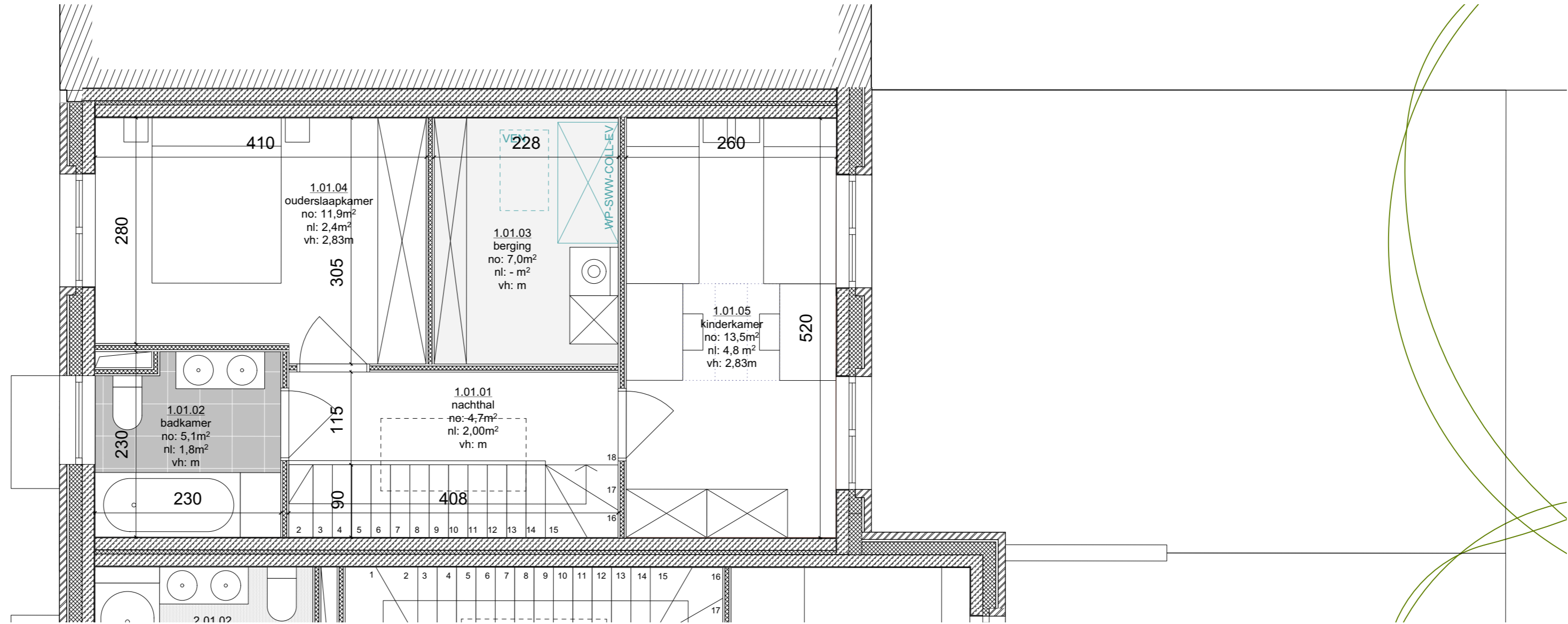




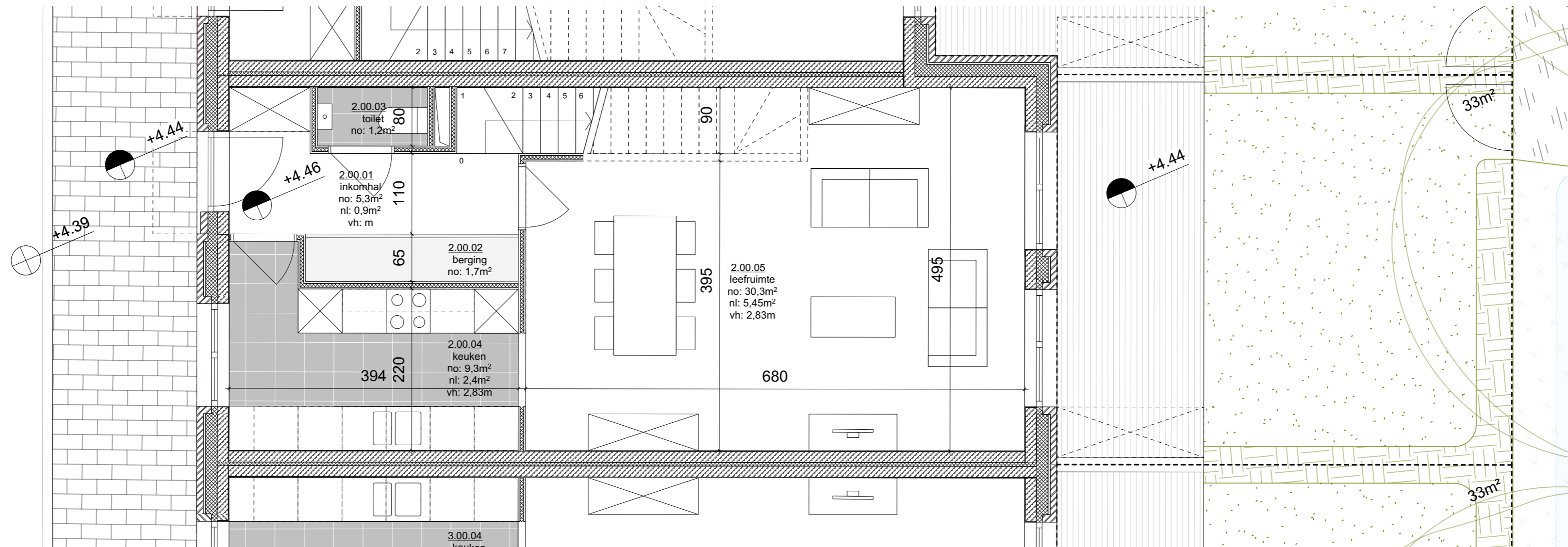
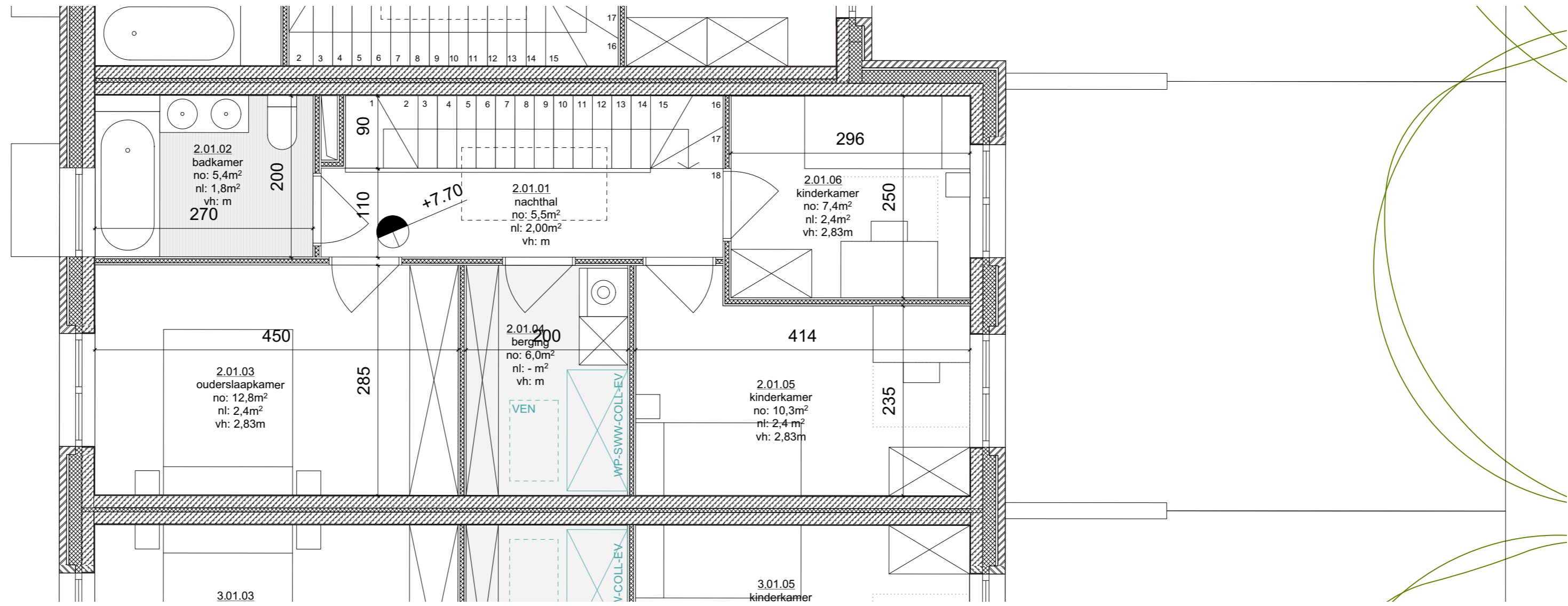


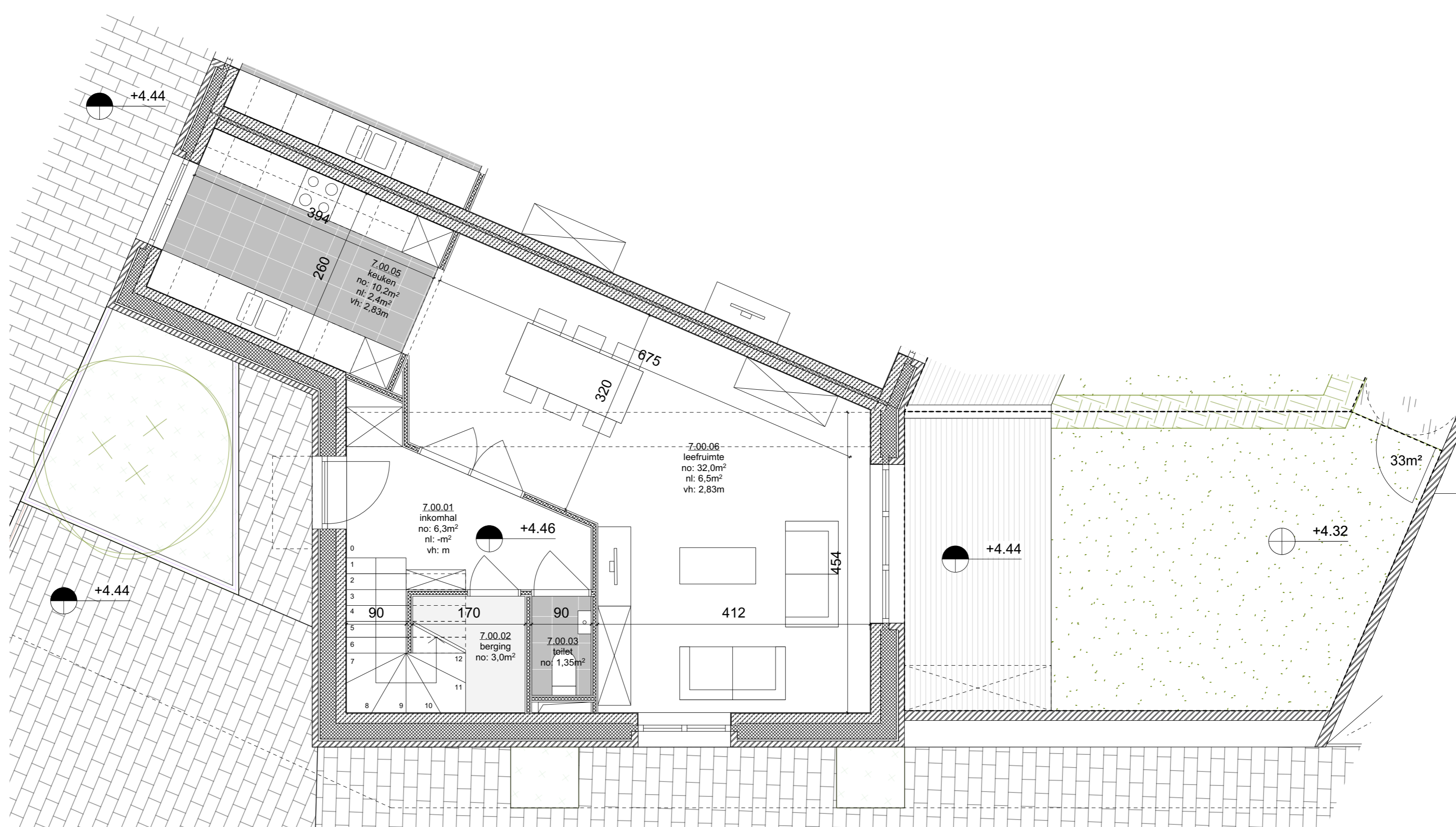
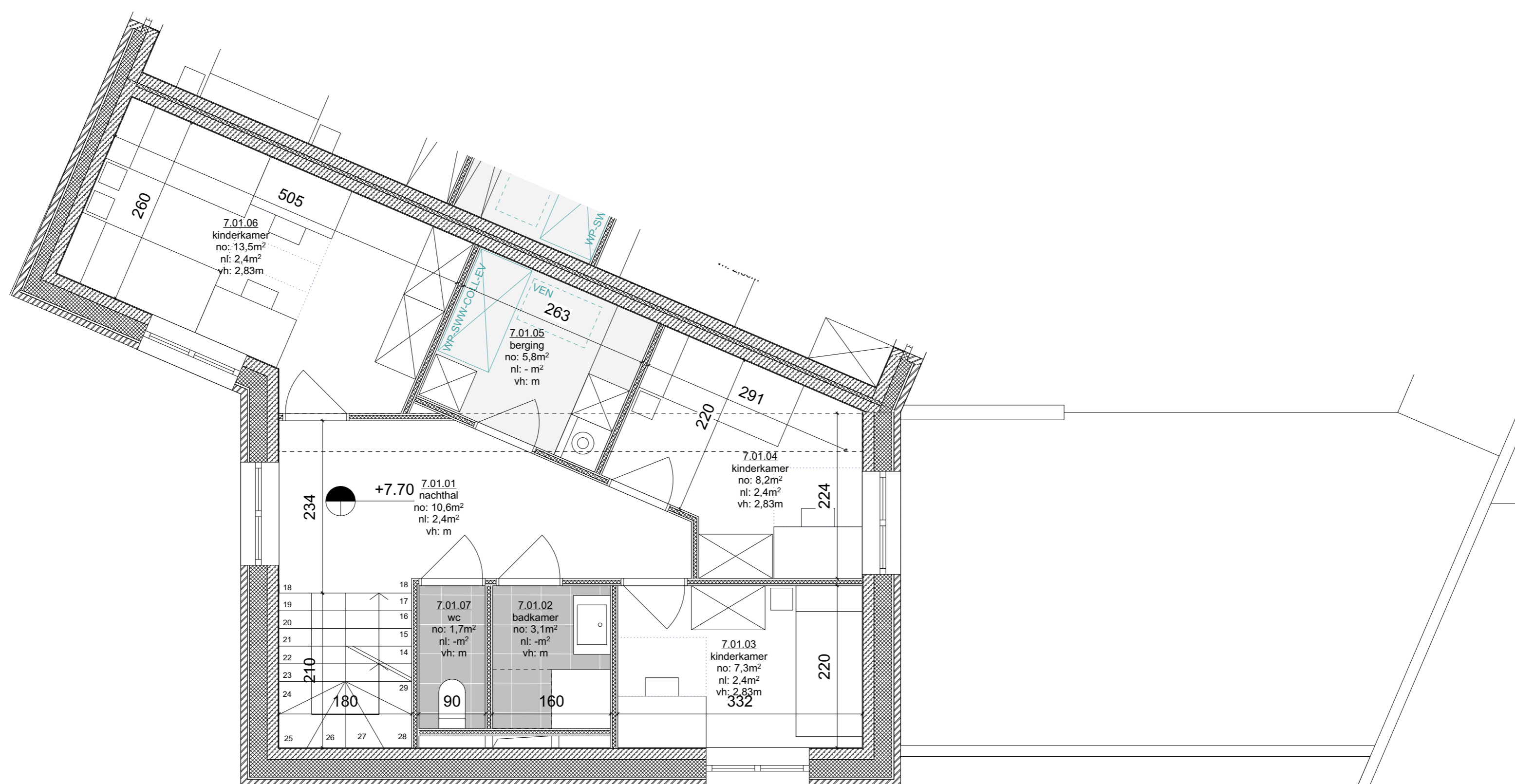
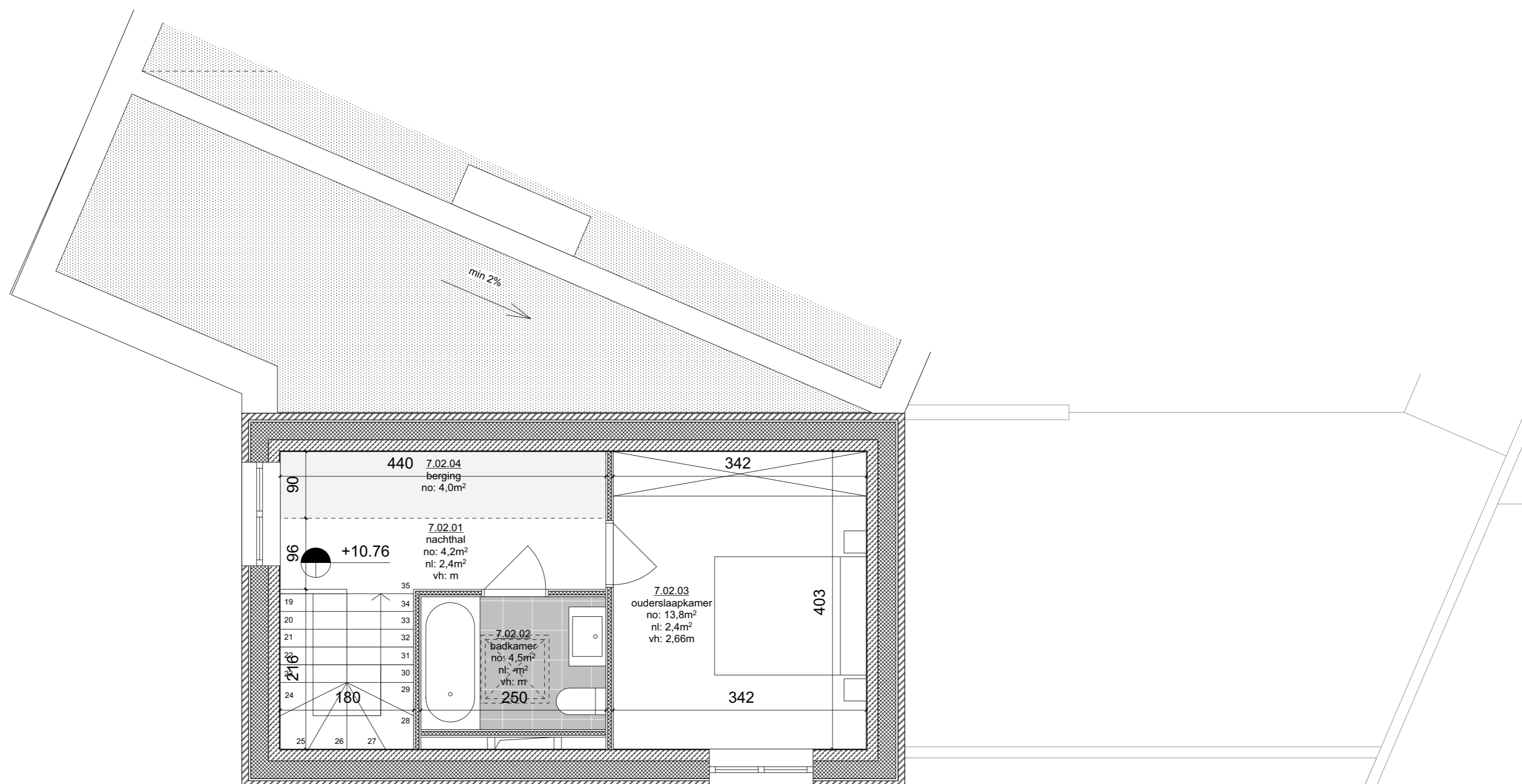


WONING 1



WONINGEN 2 - 6



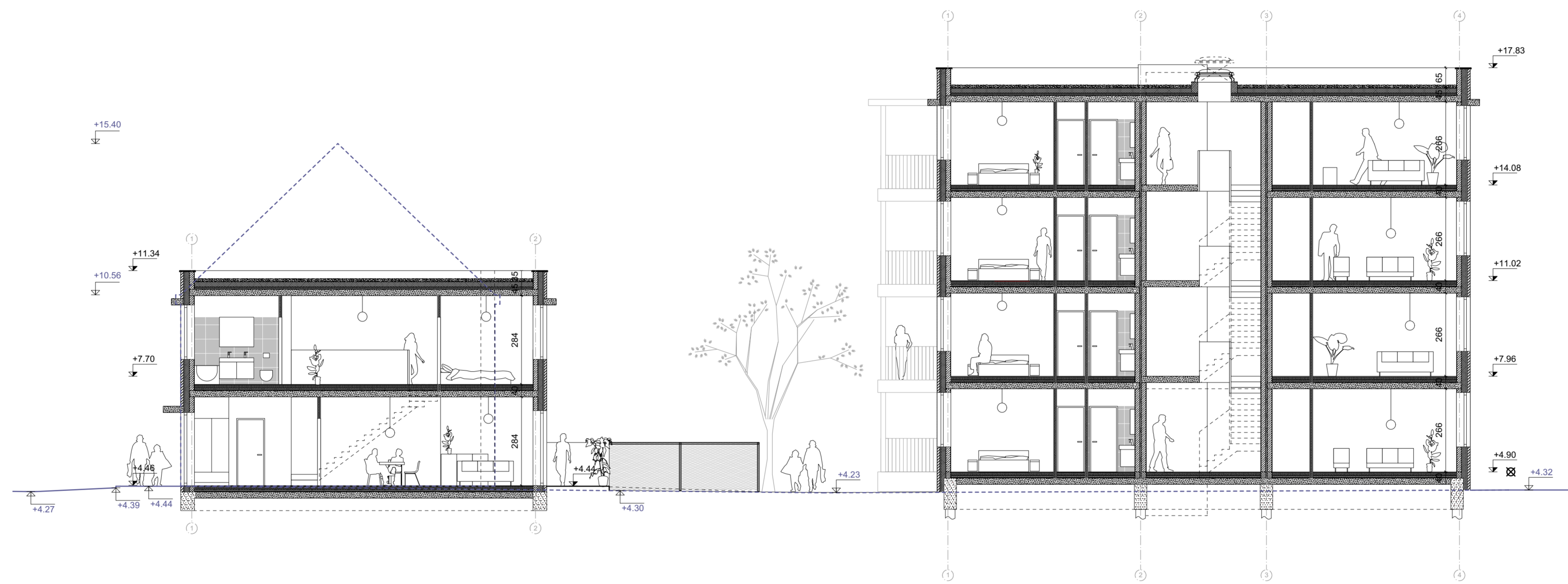


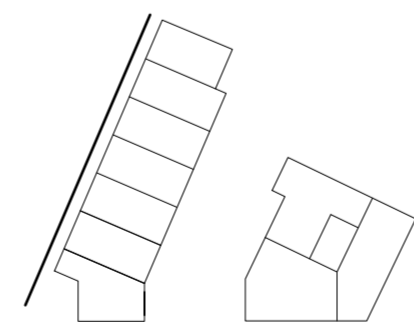
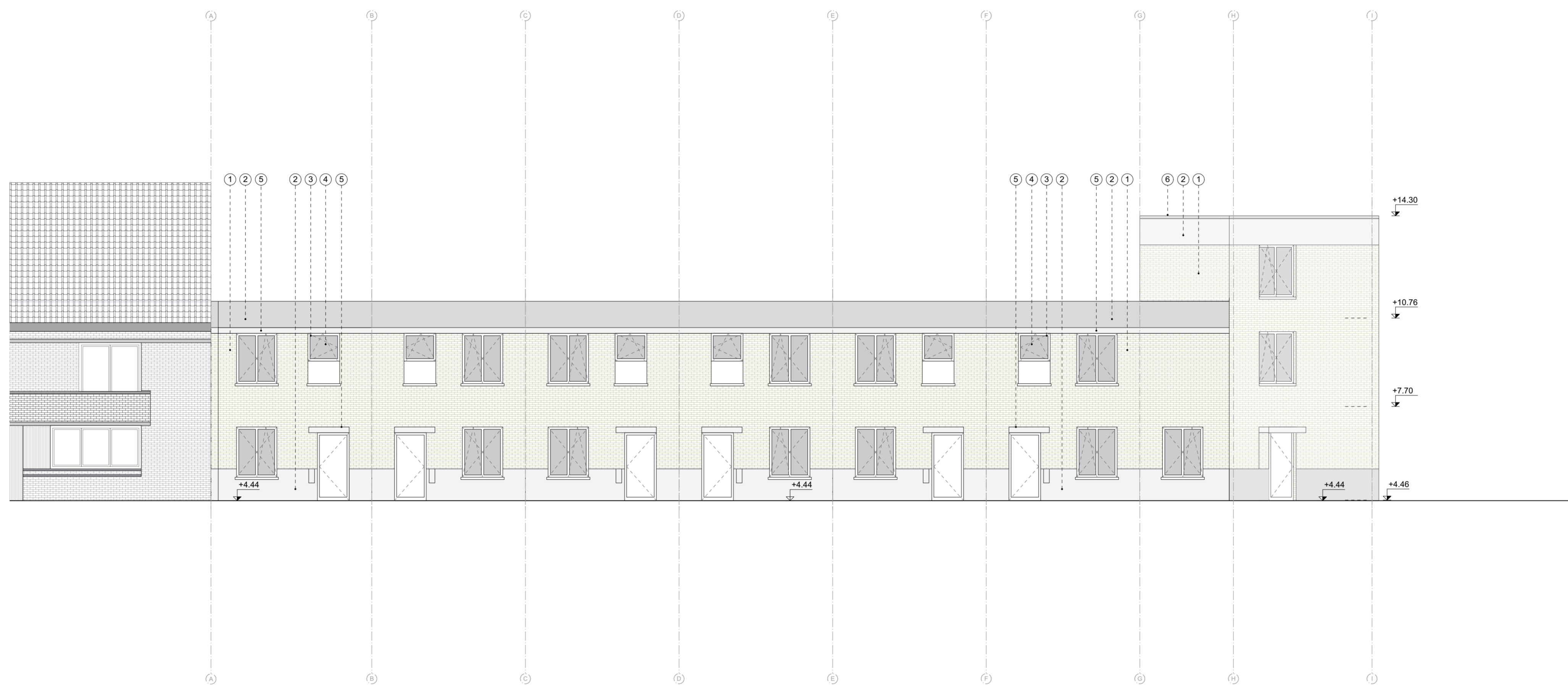
WONINGEN 8, 10, 13, 16

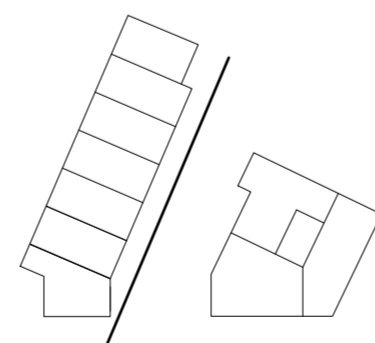


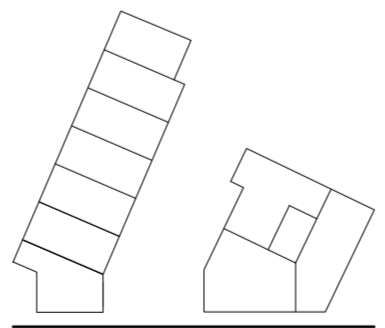
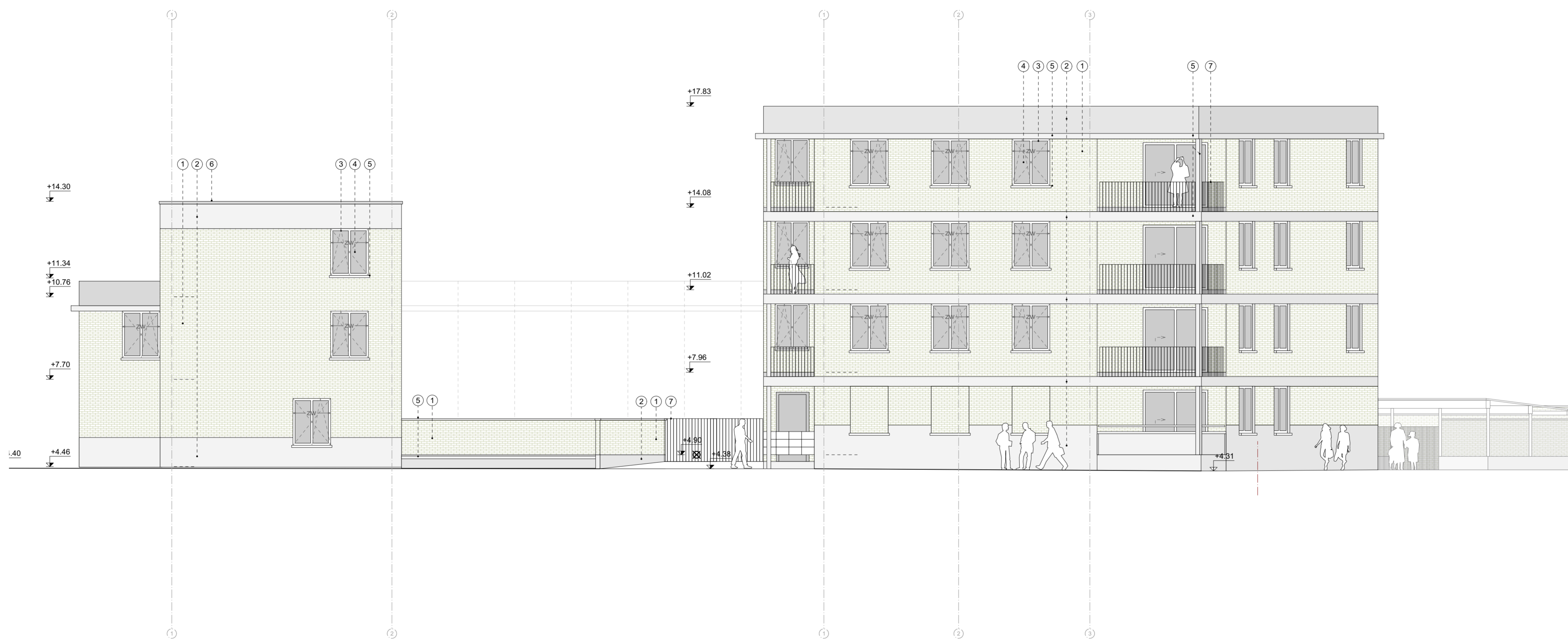
WONINGEN 9, 11, 14, 17

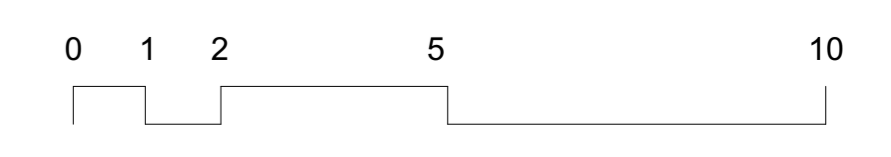
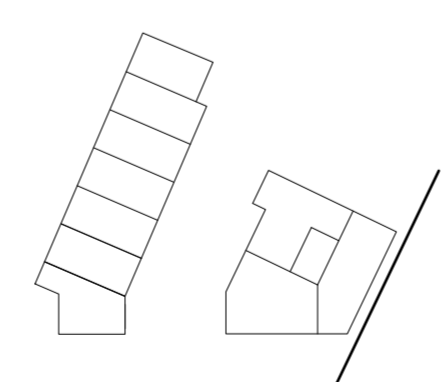
WONINGEN 12, 15, 18

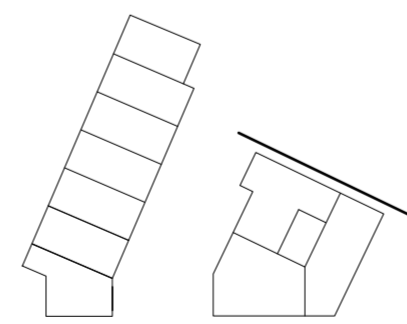
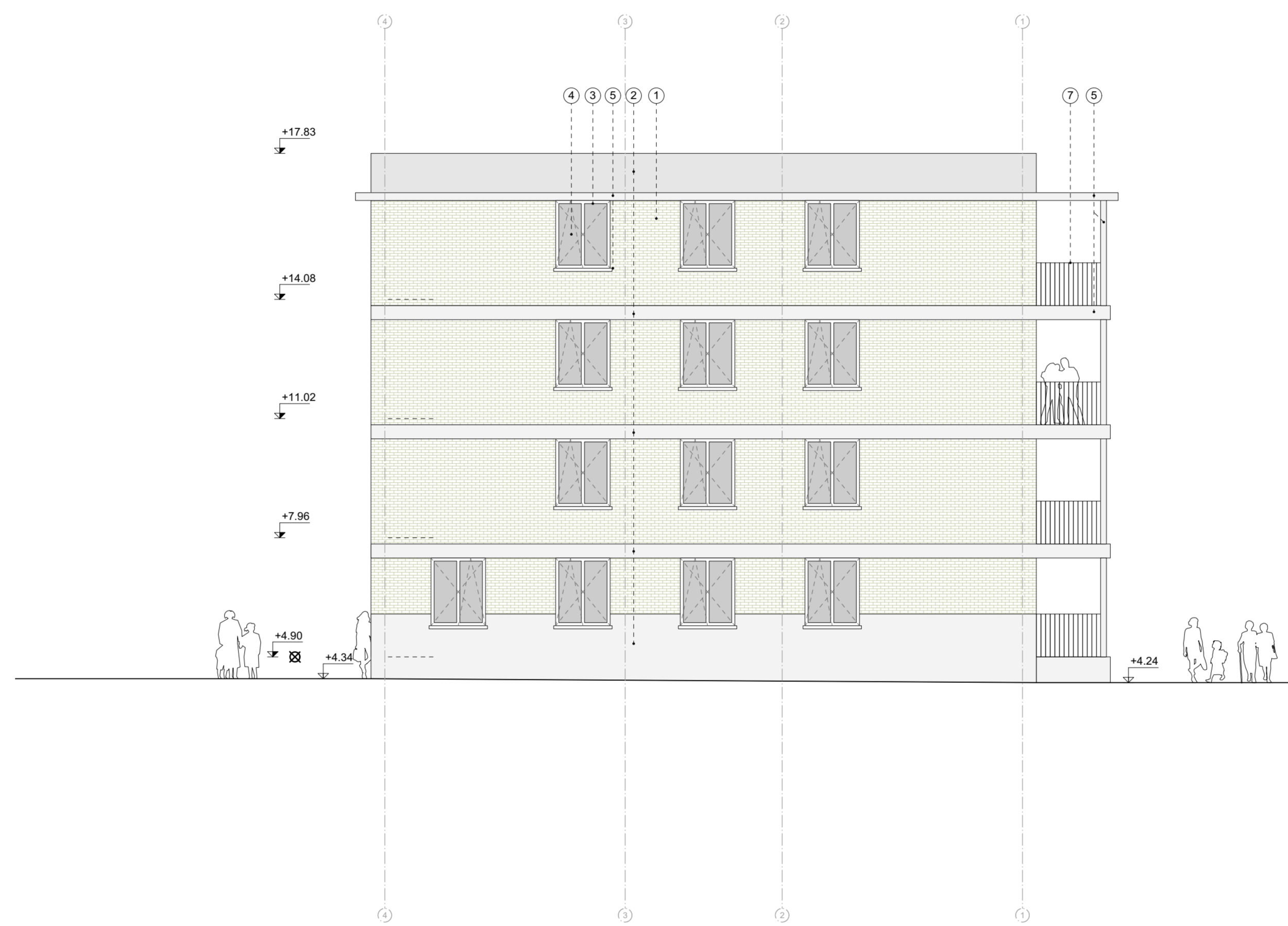


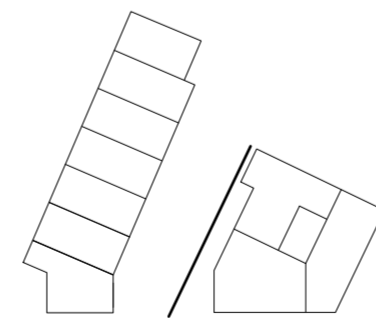










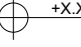
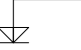
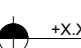
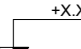
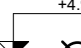


ALGEMEEN

-  bestaand
-  nieuw

PLANNEN (& SNEDES)















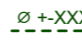


-  bestaande toestand (in zicht)
-  bestaande toestand (in snede)
-  nieuwe toestand (in zicht)
-  nieuwe toestand - beton
-  nieuwe toestand - beton/snelbouw metselwerk
-  nieuwe toestand - kalkzandsteen
-  nieuwe toestand - (gevel)metselwerk
-  nieuwe toestand - thermische isolatie
-  nieuwe toestand - chape / helingslaag
-  nieuwe toestand - grindlaag

-  +X.XX bestaand hoogtepeil (in plannen)
-  +X.XX bestaand hoogtepeil (in snedes en gevels)
-  +X.XX nieuw hoogtepeil (in plannen)
-  +X.XX nieuw hoogtepeil (in snedes en gevels)
-  +4.90 referentiepeil (in snedes en gevels)


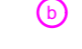




GEVELS (& SNEDES)

- ① metselwerk in (licht)beige gevelsteen
- ② (licht)grijze cementering
- ③ raam- of deurenkader in grijs-blauw gelakt aluminium
- ④ beglazing
- ⑤ betonelementen (oa dorpels)
- ⑥ gegalvaniseerd dakrandprofiel / regenwaterafvoer
- ⑦ balustrades en poortjes in grijs-blauw gelakt staal
- ⑧ kolomen en balken (fietsenstalling) in grijs-blauw gelakt staal
- ⑨ hekwerk met bovenbuis gelakt in grijs-blauw
- ⑩ grijze golfplaat (fietsenstalling)
- zw- zonnenwering - grijs-blauwe screens

INPLANTINGSPLAN

-  fotopunt
-  toezichtspuit
-  verlichtingspaal (bestaand - nieuw)
-  putje (bestaand - nieuw)
-  kast
-  perceelsgrens
-  zone bestaande erfdienstbaarheid
-  zone nieuwe erfdienstbaarheid
-  zone bestaande erfdienstbaarheid nutsleidingen
-  werfinrichting
-  nieuwe RWA leiding
-  nieuwe DWA leiding
-  nieuwe laagspanning aansluiting
-  nieuwe drinkwater aansluiting
-  openbare riolering
-  openbare laagspanning distributie
-  openbare drinkwater distributie

BRANDVEILIGHEID

-  brandmeldcentrale
-  brandblusmiddel
-  brandweerstand deur / raam
-  brandweerstand wand
-  nooduitgang
-  draaicirkel

OMGEVING (PLAN EN INPLANTINGSPLAN)

-  asfalt
-  betontegels
-  straatkolk
-  bordesteen type IB
-  bordesteen type ID1
-  bordesteen type IE
-  halfverharding
-  grasbetontegel
-  intensief beheerd grasveld
-  vaste planten
-  haag
-  infiltratie wadi's
-  houten zitelementen
-  meerstamstamige heester/boom
-  nieuwe boom
-  bestaande boom